

senseIT

Robust visual quality inspection by 3D machine vision,
fully automated and in line with production

3D inspection: the val-IT Smart

Validates all sides of large and complex manufacturing parts

www.senseIT.nl



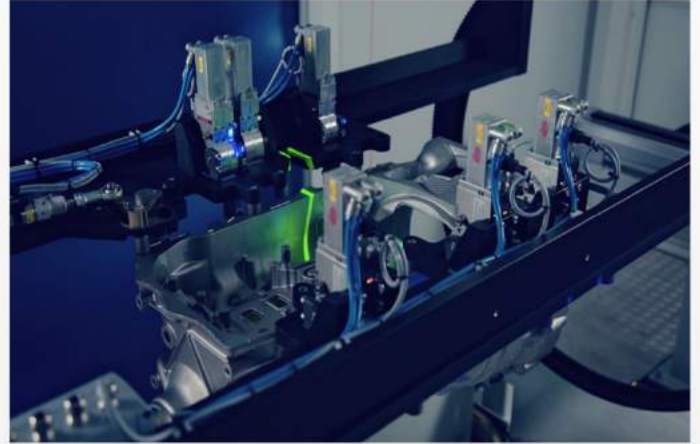
val-IT Smart

Validating each shape in detail

THE VAL-IT SMART

The manufacturing industry is faced with the demand of high quality standards. Nowadays it seems almost impossible to meet these increasing requirements.

Does this problem sound familiar to you? Worry no longer. We developed a fully automated 3D inspection cell, especially for the validation of large and complex parts. It even works in line with production!



SHAPE VALIDATION AT ITS FINEST

Within only half a minute the val-IT Smart inspects all sides of large manufacturing parts. Besides that, it also finds failures accurately on one fifth of a millimetre! This process is fully automated and does not require any human interaction. From now on you can say goodbye to human interpretation errors caused by fatigue or distraction.



3D Visual Inspection



3D Metrology



Statistical Process Control



ALL ERRORS DETECTED

Our val-IT Smart is intelligent, we made sure it knows 3D metrology like no other. During the validating process it compares the measured part to a predefined digital calibre. This way the system is able to detect all different types of defects: broken or missing parts, deformations, machining stock, indents, excessive burrs and other deviations that might occur during production or transport. When a failure is found, the val-IT Smart lets you (or your pick and place robot) know the part should be removed from the further manufacturing process.

Just find a place on the shop floor to put your val-IT Smart, and you are good to go. The user interface of the val-IT Smart is intuitive and easy. Teaching the system new or modified parts and setting tolerance fields are easily managed by its user.

PROCESS IMPROVEMENT

The information of all individual validated parts gets stored in a big database. This way the val-IT Smart is able to do a statistical analysis that informs you about recurring errors in the parts. The results of the analysis are clearly presented in the history manager. Insight in those repeating failures help you improve the entire manufacturing process.

PROVEN TECHNOLOGY

Our robust technologies and innovative software make it possible to integrate the val-IT Smart in line with the manufacturing process. This way you will find a significant reduction in all different type of unwanted costs: quality costs, labour costs and penalties for not meeting quality standards. The return on investment is realized in only a few years.

This might sound too good to be true, but right now our systems are doing their job in different factories. On our website you can find some of our customers experiences, they are already convinced.

GOT CURIOUS?

We can imagine you did. The val-IT Smart is delivered as a turnkey application. You will receive the entire cell including everything necessary to carry out automated inspections. Don't hesitate to contact us for more (technical) information or a demonstration!

SPECIFICATIONS VAL-IT SMART

val-IT Smart size in mm	4000 x 2350 x 2250 (w x d x h)
Objects maximum size in mm	800 x 500 x 500 (w x d x h)
Depth of view in mm	150
Accuracy in mm	< 0,2
Objects maximum weight in kg	30
Average scanning time in s	30
Air pressure in bar	6
Power in Volt	380
Power in kVA	3,3
Data communication	Gigabit-Ethernet

senseIT BV
Molengraaffsingel 12-14
2629 JD Delft
The Netherlands

info@senseit.nl
Tel: +31 (0) 15 7111 098
www.senseIT.nl